

8 accessible parking spaces  
183 cycle spaces

2 ASHLEY ROAD

# 5

<b>ONE BEDROOM</b>	5.1		
<b>NSA</b>	<b>50.7 m<sup>2</sup></b>		<b>546 sq ft</b>
<b>Balcony</b>	<b>5.3 m<sup>2</sup></b>		<b>57 sq ft</b>
Living/Kitchen	6.59 x 3.78 m	21ft 6" x 12ft 4"	
Master bedroom	3.24 x 3.12 m	10ft 7" x 10ft 2"	
Balcony	3.39 x 1.52 m	11ft 1" x 4ft 11"	

<b>ONE BEDROOM</b>	5.2		
<b>NSA</b>	<b>50.8 m<sup>2</sup></b>		<b>547 sq ft</b>
<b>Balcony</b>	<b>5.3 m<sup>2</sup></b>		<b>57 sq ft</b>
Living/Kitchen	6.59 x 3.78 m	21ft 6" x 12ft 4"	
Master bedroom	3.24 x 3.12 m	3ft 6" x 2ft 8"	
Balcony	3.39 x 1.52 m	11ft 1" x 4ft 11"	

<b>TWO BEDROOM</b>	5.3		
<b>NSA</b>	<b>87.0 m<sup>2</sup></b>		<b>936 sq ft</b>
<b>Balcony</b>	<b>11.2 m<sup>2</sup></b>		<b>121 sq ft</b>
Living/Kitchen	5.50 x 4.65 m	18ft 0" x 15ft 3"	
Master bedroom	3.00 x 2.88 m	9ft 10" x 9ft 5"	
Bedroom 2	3.40 x 3.17 m	11ft 1" x 10ft 4"	
Study	3.00 x 2.79 m	9ft 10" x 9ft 1"	
Balcony	5.97 x 1.74 m	19ft 7" x 5ft 8"	

<b>ONE BEDROOM</b>	5.4		
<b>NSA</b>	<b>50.5 m<sup>2</sup></b>		<b>544 sq ft</b>
<b>Balcony</b>	<b>5.6 m<sup>2</sup></b>		<b>60 sq ft</b>
Living/Kitchen	6.59 x 3.78 m	21ft 6" x 12ft 4"	
Master bedroom	3.24 x 3.12 m	10ft 7" x 10ft 2"	
Balcony	3.39 x 1.58 m	11ft 1" x 5ft 2"	

<b>TWO BEDROOM</b>	5.5		
<b>NSA</b>	<b>71.3 m<sup>2</sup></b>		<b>767 sq ft</b>
<b>Balcony</b>	<b>8.3 m<sup>2</sup></b>		<b>89 sq ft</b>
Living/Kitchen	6.59 x 3.66 m	21ft 7" x 12ft 0"	
Master bedroom	3.00 x 2.75 m	9ft 10" x 9ft 0"	
Bedroom 2	3.54 x 3.24 m	11ft 7" x 10ft 7"	
Balcony	5.18 x 1.58 m	16ft 11" x 5ft 2"	

<b>TWO BEDROOM</b>	5.6		
<b>NSA</b>	<b>74.8 m<sup>2</sup></b>		<b>805 sq ft</b>
<b>Balcony</b>	<b>7.7 m<sup>2</sup></b>		<b>83 sq ft</b>
Living/Kitchen	8.22 x 3.11 m	26ft 9" x 10ft 2"	
Master bedroom	3.41 x 3.03 m	11ft 2" x 9ft 11"	
Bedroom 2	3.62 x 2.84 m	11ft 10" x 9ft 3"	
Balcony	4.75 x 1.60 m	15ft 7" x 5ft 2"	

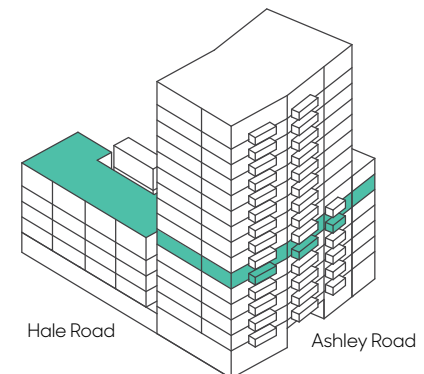
<b>TWO BEDROOM</b>	5.7		
<b>NSA</b>	<b>77.1 m<sup>2</sup></b>		<b>830 sq ft</b>
<b>Balcony</b>	<b>15.4 m<sup>2</sup></b>		<b>166 sq ft</b>
Living/Kitchen	6.82 x 3.57 m	22ft 4" x 11ft 8"	
Master bedroom	3.80 x 2.77 m	12ft 5" x 9ft 1"	
Bedroom 2	4.48 x 2.76 m	14ft 8" x 9ft 0"	
Balcony	5.60 x 2.74 m	18ft 4" x 8ft 11"	

## THE DECK RESIDENTS' ROOF GARDEN



- One bed apartment
- Two bed apartment

**FF** Fridge freezer **DW** Dish washer **S** Storage  
**MEP** Mechanical electric plumbing  
 Floorplans are for approximate measurements only. Dimensions are not intended to be used for carpet sizes, appliance sizes or items of furniture. Furniture shown is not included.





**ONE BEDROOM** 6.1

<b>NSA</b>	<b>50.7 m<sup>2</sup></b>	<b>546 sq ft</b>
<b>Balcony</b>	<b>5.3 m<sup>2</sup></b>	<b>57 sq ft</b>
Living/Kitchen	6.59 x 3.78 m	21ft 7" x 12ft 4"
Master bedroom	3.24 x 3.12 m	10ft 7" x 10ft 2"
Balcony	3.39 x 1.52 m	11ft 1" x 4ft 11"

**ONE BEDROOM** 6.2

<b>NSA</b>	<b>50.8 m<sup>2</sup></b>	<b>547 sq ft</b>
<b>Balcony</b>	<b>5.3 m<sup>2</sup></b>	<b>57 sq ft</b>
Living/Kitchen	6.59 x 3.78 m	21ft 7" x 12ft 4"
Master bedroom	3.24 x 3.12 m	10ft 7" x 10ft 2"
Balcony	3.39 x 1.52 m	11ft 1" x 4ft 11"

**TWO BEDROOM** 6.3

<b>NSA</b>	<b>87.0 m<sup>2</sup></b>	<b>936 sq ft</b>
<b>Balcony</b>	<b>11.2 m<sup>2</sup></b>	<b>121 sq ft</b>
Living/Kitchen	5.50 x 4.65 m	18ft 0" x 15ft 3"
Master bedroom	3.00 x 2.88 m	9ft 10" x 9ft 5"
Bedroom 2	3.40 x 3.17 m	11ft 1" x 10ft 4"
Study	3.00 x 2.79 m	9ft 10" x 9ft 1"
Balcony	5.97 x 1.74 m	19ft 7" x 5ft 8"

**ONE BEDROOM** 6.4

<b>NSA</b>	<b>50.5 m<sup>2</sup></b>	<b>544 sq ft</b>
<b>Balcony</b>	<b>5.6 m<sup>2</sup></b>	<b>60 sq ft</b>
Living/Kitchen	6.59 x 3.78 m	21ft 7" x 12ft 4"
Master bedroom	3.24 x 3.12 m	10ft 7" x 10ft 2"
Balcony	3.39 x 1.58 m	11ft 1" x 5ft 2"

**TWO BEDROOM** 6.5

<b>NSA</b>	<b>71.3 m<sup>2</sup></b>	<b>767 sq ft</b>
<b>Balcony</b>	<b>8.3 m<sup>2</sup></b>	<b>89 sq ft</b>
Living/Kitchen	6.59 x 3.66 m	21ft 7" x 12ft 0"
Master bedroom	3.00 x 2.75 m	9ft 10" x 9ft 0"
Bedroom 2	3.54 x 3.24 m	11ft 7" x 10ft 7"
Balcony	5.18 x 1.58 m	16ft 11" x 5ft 2"

**TWO BEDROOM** 6.6

<b>NSA</b>	<b>74.8 m<sup>2</sup></b>	<b>805 sq ft</b>
<b>Balcony</b>	<b>7.7 m<sup>2</sup></b>	<b>83 sq ft</b>
Living/Kitchen	8.22 x 3.71 m	26ft 11" x 12ft 2"
Master bedroom	3.41 x 3.03 m	11ft 2" x 9ft 11"
Bedroom 2	3.62 x 2.84 m	11ft 10" x 9ft 3"
Balcony	4.75 x 1.60 m	15ft 7" x 5ft 2"

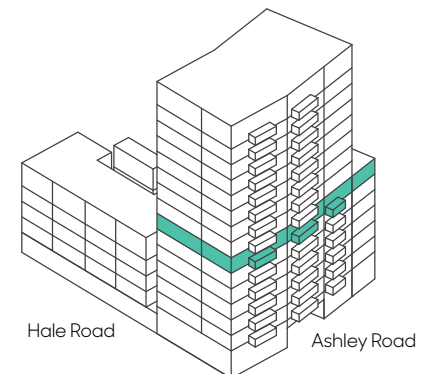
**TWO BEDROOM** 6.7

<b>NSA</b>	<b>77.1 m<sup>2</sup></b>	<b>830 sq ft</b>
<b>Balcony</b>	<b>7.3 m<sup>2</sup></b>	<b>79 sq ft</b>
Living/Kitchen	6.82 x 3.57 m	22ft 4" x 11ft 8"
Master bedroom	3.80 x 2.77 m	12ft 5" x 9ft 1"
Bedroom 2	4.48 x 2.76 m	14ft 8" x 9ft 0"
Balcony	5.60 x 2.74 m	18ft 4" x 8ft 11"



- One bed apartment
- Two bed apartment

**FF** Fridge freezer **DW** Dish washer **S** Storage  
**MEP** Mechanical electric plumbing  
 Floorplans are for approximate measurements only. Dimensions are not intended to be used for carpet sizes, appliance sizes or items of furniture. Furniture shown is not included.





**TWO BEDROOM 7.1**

**NSA** 86.0 m<sup>2</sup> 926 sq ft

**Balcony** 28.0 m<sup>2</sup> 301 sq ft

Living/Kitchen 7.21 x 4.21 m 23ft 7" x 13ft 9"

Master bedroom 4.65 x 3.00 m 15ft 3" x 9ft 10"

Bedroom 2 3.32 x 2.90 m 10ft 10" x 9ft 6"

Balcony 5.77 x 4.82 m 18ft 11" x 15ft 9"

**TWO BEDROOM 7.2**

**NSA** 78.7 m<sup>2</sup> 847 sq ft

**Balcony** 64.8 m<sup>2</sup> 698 sq ft

Living/Kitchen 6.34 x 4.55 m 20ft 9" x 14ft 11"

Master bedroom 3.44 x 3.15 m 11ft 3" x 10ft 4"

Bedroom 2 4.90 x 3.11 m 16ft 0" x 10ft 2"

Balcony 11.15 x 5.77 m 36ft 9" x 18ft 11"

**TWO BEDROOM 7.3**

**NSA** 71.3 m<sup>2</sup> 767 sq ft

**Balcony** 8.3 m<sup>2</sup> 89 sq ft

Living/Kitchen 6.59 x 3.66 m 21ft 7" x 12ft 0"

Master bedroom 3.00 x 2.75 m 9ft 10" x 9ft 0"

Bedroom 2 3.54 x 3.24 m 11ft 7" x 10ft 7"

Balcony 5.18 x 1.58 m 16ft 11" x 5ft 2"

**TWO BEDROOM 7.4**

**NSA** 74.8 m<sup>2</sup> 805 sq ft

**Balcony** 7.7 m<sup>2</sup> 83 sq ft

Living/Kitchen 8.22 x 3.71 m 26ft 11" x 12ft 2"

Master bedroom 3.41 x 3.03 m 11ft 2" x 9ft 11"

Bedroom 2 3.62 x 2.84 m 11ft 10" x 9ft 3"

Balcony 4.75 x 1.60 m 15ft 7" x 5ft 2"

**TWO BEDROOM 7.5**

**NSA** 77.1 m<sup>2</sup> 830 sq ft

**Balcony** 7.3 m<sup>2</sup> 79 sq ft

Living/Kitchen 6.82 x 3.57 m 22ft 4" x 11ft 8"

Master bedroom 3.80 x 2.77 m 12ft 5" x 9ft 1"

Bedroom 2 4.48 x 2.76 m 14ft 8" x 9ft 0"

Balcony 4.75 x 1.60 m 15ft 7" x 5ft 2"

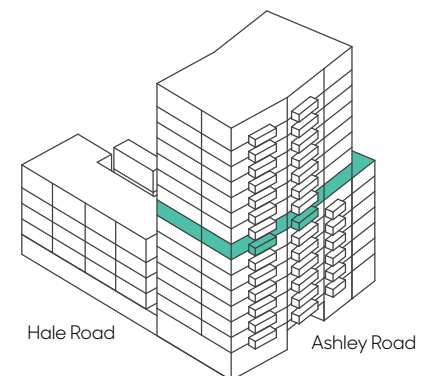


○ Two bed apartment

**FF** Fridge freezer **DW** Dish washer **S** Storage

**MEP** Mechanical electric plumbing

Floorplans are for approximate measurements only. Dimensions are not intended to be used for carpet sizes, appliance sizes or items of furniture. Furniture shown is not included.



# 8-13



## TWO BEDROOM 8.1-13.1

<b>NSA</b>	<b>86.0 m<sup>2</sup></b>	<b>926 sq ft</b>
<b>Balcony</b>	<b>8.1 m<sup>2</sup></b>	<b>87 sq ft</b>
Living/Kitchen	7.21 x 4.21 m	23ft 7" x 13ft 9"
Master bedroom	4.65 x 3.00 m	15ft 3" x 9ft 10"
Bedroom 2	3.32 x 2.90 m	10ft 5" x 9ft 6"
Balcony	5.07 x 1.52 m	16ft 7" x 4ft 11"

## TWO BEDROOM 8.2-13.2

<b>NSA</b>	<b>71.0 m<sup>2</sup></b>	<b>764 sq ft</b>
<b>Balcony</b>	<b>6.8 m<sup>2</sup></b>	<b>73 sq ft</b>
Living/Kitchen	6.35 x 4.55 m	20ft 10" x 14ft 11"
Master bedroom	3.16 x 3.15 m	10ft 4" x 10ft 4"
Bedroom 2	4.90 x 2.75 m	16ft 0" x 9ft 0"
Balcony	3.31 x 2.22 m	10ft 8" x 7ft 2"

## TWO BEDROOM 8.3-13.3

<b>NSA</b>	<b>71.3 m<sup>2</sup></b>	<b>767 sq ft</b>
<b>Balcony</b>	<b>8.3 m<sup>2</sup></b>	<b>89 sq ft</b>
Living/Kitchen	6.59 x 3.66 m	21ft 7" x 12ft 0"
Master bedroom	3.00 x 2.75 m	9ft 10" x 9ft 0"
Bedroom 2	3.54 x 3.24 m	11ft 7" x 10ft 7"
Balcony	5.18 x 1.58 m	16ft 11" x 5ft 2"

## TWO BEDROOM 8.4-13.4

<b>NSA</b>	<b>74.8 m<sup>2</sup></b>	<b>805 sq ft</b>
<b>Balcony</b>	<b>7.7 m<sup>2</sup></b>	<b>83 sq ft</b>
Living/Kitchen	8.22 x 3.71 m	26ft 11" x 12ft 2"
Master bedroom	3.41 x 3.03 m	11ft 2" x 9ft 11"
Bedroom 2	3.62 x 2.84 m	11ft 10" x 9ft 3"
Balcony	4.75 x 1.60 m	15ft 7" x 5ft 2"

## TWO BEDROOM 8.5-13.5

<b>NSA</b>	<b>77.1 m<sup>2</sup></b>	<b>830 sq ft</b>
<b>Balcony</b>	<b>7.3 m<sup>2</sup></b>	<b>79 sq ft</b>
Living/Kitchen	6.82 x 3.57 m	22ft 4" x 11ft 8"
Master bedroom	3.80 x 2.77 m	12ft 5" x 9ft 1"
Bedroom 2	4.48 x 2.76 m	14ft 8" x 9ft 0"
Balcony	4.75 x 1.60 m	15ft 7" x 5ft 2"

## TWO BEDROOM

- 8.1
- 9.1
- 10.1
- 11.1
- 12.1
- 13.1

## TWO BEDROOM

- 8.2
- 9.2
- 10.2
- 11.2
- 12.2
- 13.2

## TWO BEDROOM

- 8.3
- 9.3
- 10.3
- 11.3
- 12.3
- 13.3

## TWO BEDROOM

- 8.4
- 9.4
- 10.4
- 11.4
- 12.4
- 13.4

## TWO BEDROOM

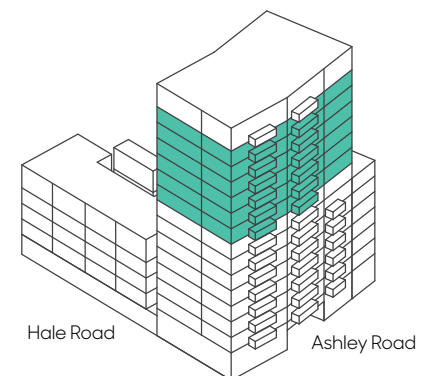
- 8.5
- 9.5
- 10.5
- 11.5
- 12.5
- 13.5



● Two bed apartment

**FF** Fridge freezer **DW** Dish washer **S** Storage  
**MEP** Mechanical electric plumbing

Floorplans are for approximate measurements only. Dimensions are not intended to be used for carpet sizes, appliance sizes or items of furniture. Furniture shown is not included.



# 14



## TWO BEDROOM 14.1

<b>NSA</b>	<b>86.0 m<sup>2</sup></b>	<b>926 sq ft</b>
<b>Balcony</b>	<b>8.1 m<sup>2</sup></b>	<b>87 sq ft</b>
Living/Kitchen	7.21 x 4.21 m	23ft 7" x 13ft 9"
Master bedroom	4.65 x 3.0 m	15ft 3" x 9ft 10"
Bedroom 2	2.90 x 3.32 m	9ft 6" x 10ft 10"
Balcony	5.07 x 1.52 m	16ft 6" x 4ft 9"

## TWO BEDROOM 14.2

<b>NSA</b>	<b>71.0 m<sup>2</sup></b>	<b>764 sq ft</b>
<b>Balcony</b>	<b>6.7 m<sup>2</sup></b>	<b>72 sq ft</b>
Living/Kitchen	6.35 x 4.55 m	20ft 10" x 14ft 11"
Master bedroom	3.16 x 3.15 m	10ft 4" x 10ft 4"
Bedroom 2	4.90 x 2.75 m	16ft 0" x 9ft 0"
Balcony	3.31 x 2.22 m	10ft 8" x 7ft 2"

## TWO BEDROOM 14.3

<b>NSA</b>	<b>71.3 m<sup>2</sup></b>	<b>767 sq ft</b>
<b>Balcony</b>	<b>8.3 m<sup>2</sup></b>	<b>89 sq ft</b>
Living/Kitchen	6.59 x 3.66 m	21ft 7" x 12ft 0"
Master bedroom	3.00 x 2.75 m	9ft 10" x 9ft 0"
Bedroom 2	3.54 x 3.24 m	11ft 7" x 10ft 7"
Balcony	5.18 x 1.58 m	16ft 11" x 5ft 2"

## TWO BEDROOM 14.4 LOWER LEVEL

<b>NSA</b>	<b>74.4 m<sup>2</sup></b>	<b>801 sq ft</b>
Living/Kitchen	6.52 x 3.40 m	21ft 4" x 11ft 1"
Master bedroom	3.65 x 2.90 m	11ft 7" x 9ft 6"
Bedroom 2	3.77 x 2.79 m	12ft 4" x 9ft 1"

## TWO BEDROOM 14.5 LOWER LEVEL

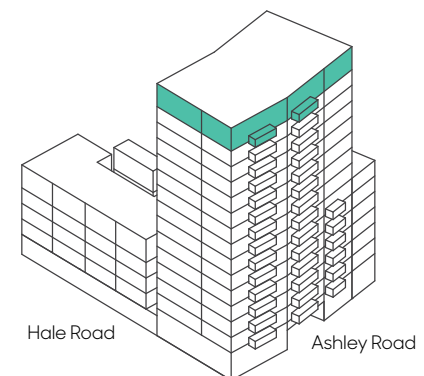
<b>NSA</b>	<b>76.7 m<sup>2</sup></b>	<b>826 sq ft</b>
Living/Kitchen	6.82 x 3.57 m	22ft 4" x 11ft 8"
Master bedroom	3.62 x 2.75 m	11ft 10" x 9ft 0"
Bedroom 2	4.18 x 2.78 m	13ft 8" x 9ft 1"



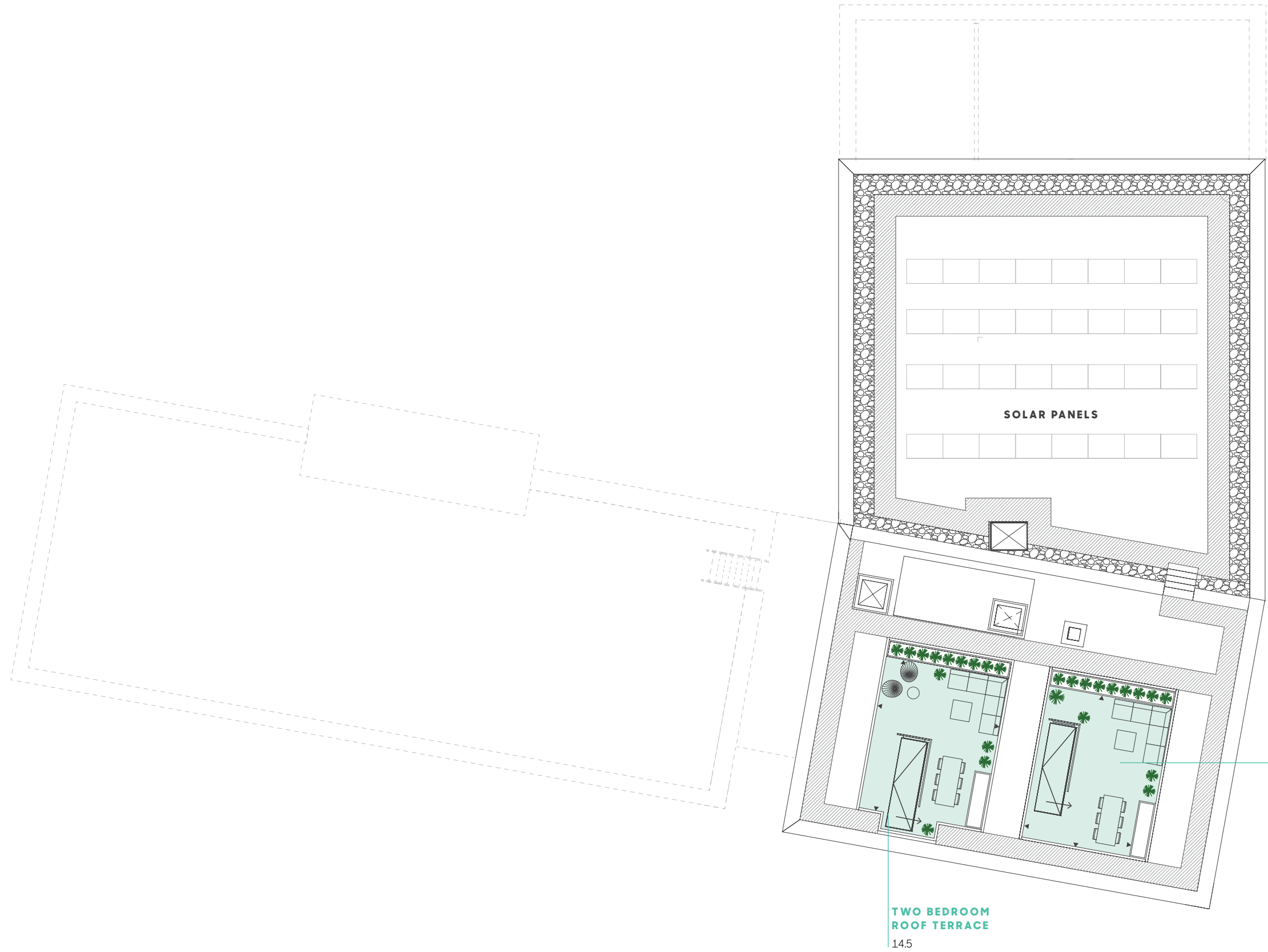
● Two bed apartment

**FF** Fridge freezer **DW** Dish washer **S** Storage  
**MEP** Mechanical electric plumbing

Floorplans are for approximate measurements only. Dimensions are not intended to be used for carpet sizes, appliance sizes or items of furniture. Furniture shown is not included.



# 15



**TWO BEDROOM** 14.4 UPPER LEVEL

**Roof terrace** 31.4 m<sup>2</sup> 338 sq ft

Roof terrace 6.35 x 4.51 m 20ft 10" x 14ft 9"

**TWO BEDROOM** 14.5 UPPER LEVEL

**Roof terrace** 32.6 m<sup>2</sup> 351 sq ft

Roof terrace 6.35 x 5.13 m 20ft 10" x 16ft 9"

● Two bed apartment

Floorplans are for approximate measurements only. Dimensions are not intended to be used for carpet sizes, appliance sizes or items of furniture. Furniture shown is not included.

**TWO BEDROOM  
ROOF TERRACE**  
14.4

**TWO BEDROOM  
ROOF TERRACE**  
14.5

